

Recap & Findings

Taskforce, 5th May 2021
South London Citizens

Project timeline



Organise

Local leaders (community and public sector) agree to listen and be part of the solution.

Listen

Listen to local communities.

10 Nov Summit
Nov-Jan Listening Trainings
Nov-Feb Listening Campaign
Mar Digital listening

Plan

Move from problem to issue, and from issue to solutions.

Mar Problem to Issue workshops
Apr-May Co-produce proposals

Act

Commit to and begin co-owned and co-delivered actions.

June Community-led Summit
June Practical planning & co-delivery begin

Evaluate

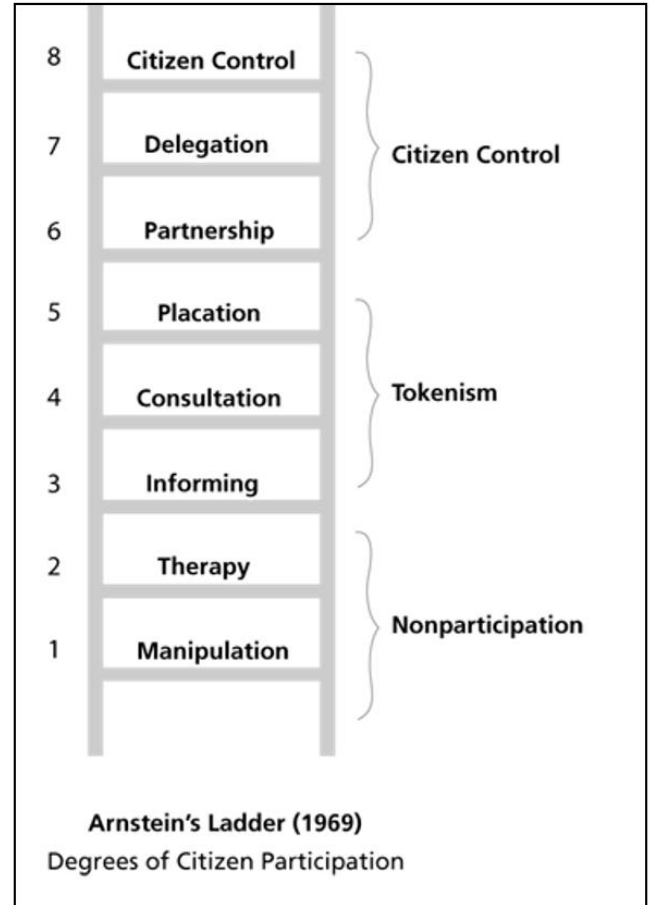
Reflect on the process and evaluate outcomes compared to objectives.

Highlights

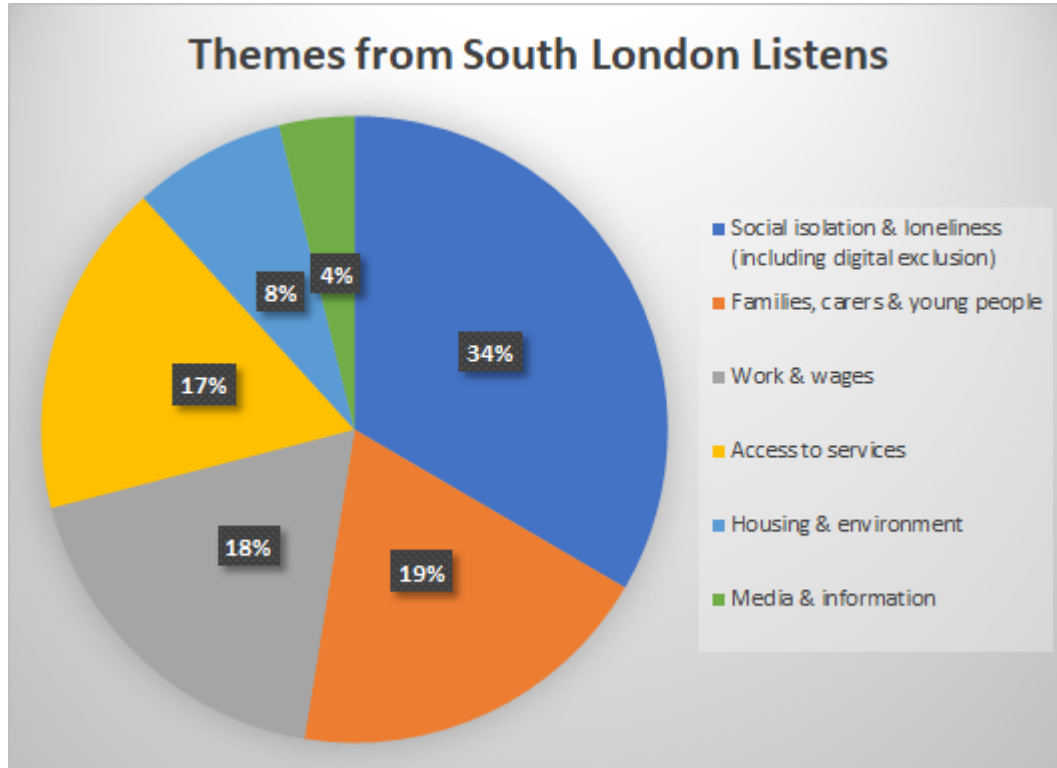
- Over 300 people trained
- Southwark, Croydon, Lewisham and SW boroughs hosted their own listening events
- Over 5,700 people listened to face-to-face
- Almost 600 people completed online survey
- ‘Problem to issue’ workshops with 150 people, co-chaired by community and Taskforce on 6 themes including testimony and idea generation

Ladder of participation

- Partnership - selecting themes, issues workshops, prioritisation
- Co-production of solutions - solutions workshops, 24/25/26 May
- Citizen control - Summit, 16 June



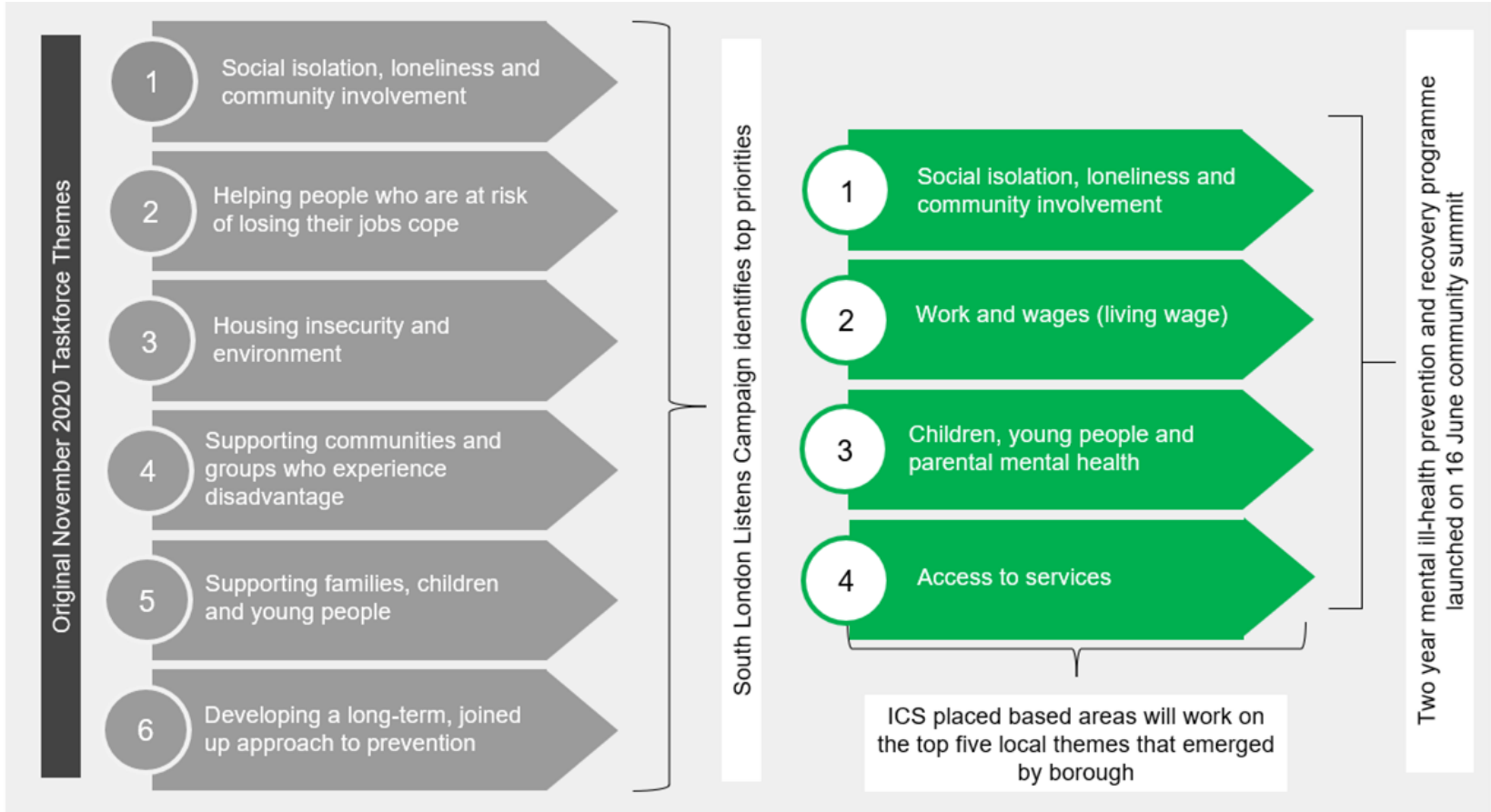
Listening themes



‘Problem to issue’ workshops on:

- Social isolation & loneliness
- Children, Young People, Schools & Prevention
- Parental mental health
- Work & wages
- Access to services
- Digital exclusion

Prioritisation



Children, young people and parental mental health

Problem

Children, young people and parental mental health

Issue

Some parents not accessing traditional models of support.
Young people not getting support whilst waiting for access to services.

Idea

Peer to peer support for parents. Virtual waiting room offer of support whilst waiting.

Work and wages

Problem

Insecure work and poverty

Issue

Employees not getting enough hours of secure work,
employees paying below London Living wage

Idea

Mental health and NHS organisations, Local
authorities to accredit as Living wage employers.
Explore living hours.

Access to services

Problem

Access to services

Issue

Access to services for migrant communities who lack trust with traditional models of support and can't get culturally appropriate support.

Idea

Community embedded workers. Key service information translated.

Social isolation and loneliness

Problem

Loneliness and social isolation

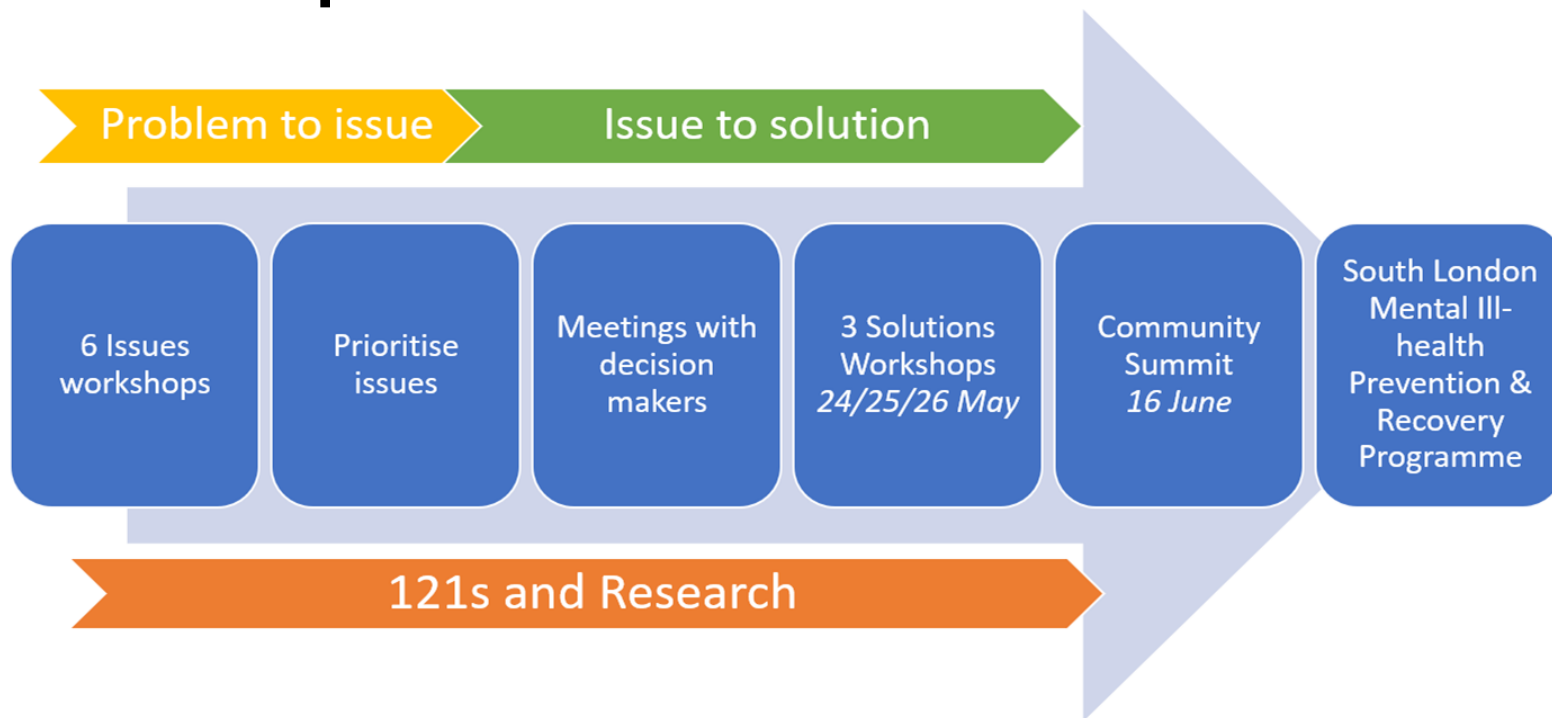
Issue

People don't have the community support structures needed to be resilient and get support

Idea

Mental health champions and 'listening hubs' to provide more connection and access to information

Co-production process



Principles:

- Relationships are the foundation - trust and network knowledge
- Thinking & working as equals - appreciate all expertise
- Build & iterate on ideas rather than criticising

Steps:

1. Get together as a team
2. Meet 121 with decision makers
3. Have solutions workshop

Next steps

- Taskforce meeting, 5th May, 9-10am
- Solutions workshops, 24th / 25th / 26th May (times tbc)
- Taskforce meeting, 27th May, 12.30-1.30pm
- MH core team meeting, 1st June, 1-2.15pm
- Community Summit, 16th June, 6-8pm